

PLUMBING KEYNOTES:

- REFER TO DETAIL #3 THIS SHEET FOR CONTINUATION.
- REFER TO DETAIL #4 THIS SHEET FOR CONTINUATION.
- REFER TO DETAIL #1 SHEET P-101 FOR CONTINUATION.
- REFER TO DETAIL #2 SHEET P-102 FOR CONTINUATION.
- 3/4" INSULATED COLD WATER LINE DOWN IN WALL AND OUT TO HOSE BIBB. PROVIDE BALL TYPE CUTOFF VALVE IN ACCESSIBLE LOCATION.
- TAP OFF LAVATORY P-TRAP WITH 1/2" CHROME LINE TO WALL AND CONTINUE IN WALL WITH 1/2" SOFT COPPER LINE TO BELOW GRADE TO TRAP PRIMER CONNECTION ON FLOOR DRAIN. ALL EXPOSED SUPPLY LINE SHALL BE CHROME (DEARBORN 831-1 OR EQUAL P-TRAP TYPE).
- PROVIDE INSULATED HUB DRAIN ABOVE CEILING FOR DUCTLESS SPLIT SYSTEM CONDENSATE DRAIN. INSULATE DOWN TO BELOW SLAB. REFER TO SHEET P-203 DETAIL #13. COORDINATE EXACT ELEVATION AND LOCATION IN FIELD WITH MECHANICAL CONTRACTORS PRIOR TO ROUGH-IN.
- PROVIDE INSULATED HUB DRAIN ON WALL FOR GRAVITY FED DUCTLESS SPLIT SYSTEM CONDENSATE DRAIN. INSULATE DOWN TO BELOW SLAB. REFER TO SHEET P-203 DETAIL #13. COORDINATE EXACT ELEVATION AND LOCATION IN FIELD WITH MECHANICAL AND ELECTRICAL CONTRACTORS PRIOR TO ROUGH-IN.
- PROVIDE INSTANTANEOUS WATER HEATER BENEATH COUNTER. COORDINATE WITH ARCHITECT'S MILLWORK PLANS PRIOR TO ROUGH-IN.
- INSTALL EYEWASH AND MIXING VALVE TO SUPPLY TEPID WATER PER MANUFACTURER'S INSTALLATION INSTRUCTIONS. PROVIDE P-TRAP, DRAIN, AND VENT LINE FOR EYEWASH.
- PROVIDE 4" ROOF DRAIN. EXTEND ROOF DRAIN LINES AT MAX HEIGHT AS SHOWN WITH INSULATION AND PIPE HANGERS WITH SADDLES. INSULATE ALL STORM DRAIN PIPING ABOVE SLAB WITH 2" 3/4" DENSITY DUCT WRAP TAPED AT ALL JOINTS. COORDINATE EXACT LOCATION AND ROUTING IN THE FIELD WITH ARCHITECT, STRUCTURE, DUCTWORK, PIPING, ETC. PRIOR TO ROUGH-IN. EMERGENCY OVERFLOW SHALL BE THROUGH SCUPPERS.
- COORDINATE ROOF DRAIN LOCATIONS WITH MECHANICAL CONTRACTOR PRIOR TO ROUGH-IN.
- PROVIDE A CUTOFF VALVE IN A CAST IRON VALVE BOX WITH METAL COVER MARKED "WATER". RISE UP WITH INSULATED DOMESTIC COLD WATER PIPING IN OIL/COMPRESSOR 105 TO MAX HEIGHT SECURED TO WALL AND CONTINUE AS SHOWN SECURED TO WALL. PROVIDE HEAT TRACE CABLE (CHROMALOX CPR-5 OR APPROVED EQUAL) ALONG THE ENTIRE DOMESTIC COLD WATER PIPING EXTENDED WITHIN THE UN-CONDITIONED / UN-HEATED OIL/COMPRESSOR AND BARREL STORAGE SPACES (ELEC. SERVICE 277/1/60). PROVIDE CONTROLLER, CONDUIT, AND ALL COMPONENTS REQUIRED TO FOR A COMPLETE AND PROPERLY FUNCTIONING HEAT TRACE INSTALLATION. COORDINATE ALL REQUIREMENTS WITH ELECTRICAL CONTRACTOR.
- PROVIDE A CUTOFF VALVE IN A CAST IRON VALVE BOX WITH METAL COVER MARKED "WATER". RISE UP IN EXTERIOR WALL AND CONTINUE WITH INSULATED WATER LINES TO ABOVE CEILING.

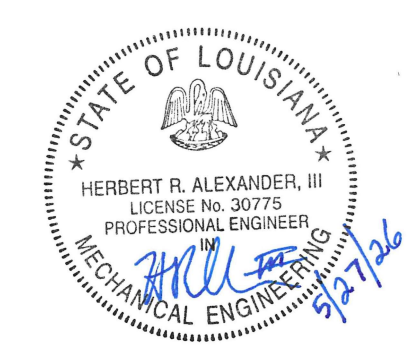
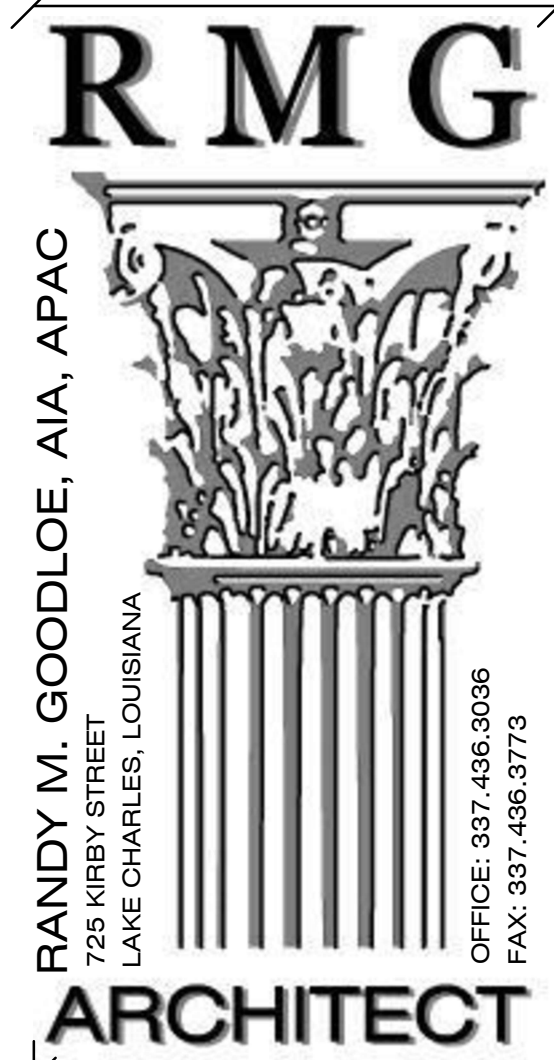
NOTE:
PROPERLY FIRE CAULK ALL PENETRATIONS THROUGH RATED WALLS. COORDINATE FIRE CAULKING WITH ASSEMBLY REQUIREMENTS. COORDINATE WITH ARCHITECT'S PLANS, NOTES, SPECIFICATIONS, ETC.

NOTE:
COORDINATE P-TRAP INSTALLATION HEIGHT WITH ARCHITECT'S KNEE SPACE COVER PANELS AND COUNTER TOP HEIGHTS PRIOR TO ROUGH-IN.



ASSOCIATED DESIGN GROUP, INC.
3909 W Congress Street, Suite 201
Lafayette, Louisiana 70506
Phone: (337) 234-5710
Email: adginc@adginc.org

Project No. 25326



NEW CONSTRUCTION
FORD PRO
FOR
MIKE WILLIS
2010 PATTON ST.

© COPYRIGHT 2019,
RANDY M. GOODLOE, A.I.A. APAC
ALL INFORMATION, EITHER DRAWN, WRITTEN,
OR IMPLIED APPEARING IN THIS DOCUMENT
SHALL NOT BE DUPLICATED, DISCLOSED, OR
OTHERWISE USED WITHOUT THE WRITTEN
PERMISSION OF THE AUTHOR, RANDY M.
GOODLOE, AIA, APAC. THIS DOCUMENT IS AN
INSTRUMENT OF SERVICE AND IS THE SOLE
PROPERTY OF THE AUTHOR. FURTHERMORE,
THE USE OF THIS DOCUMENT FOR ANY
PURPOSE SHALL BE REVOKED, IF THE INTENT
OF THE DESIGN OR THE CONSTRUCTION
TECHNIQUES OR DETAILS SHOWN HEREIN
ARE NOT ADHERED TO OR THE
CONTRACTUAL AGREEMENT GOVERNING
THEIR USE ARE NOT STRICTLY ADHERED TO.

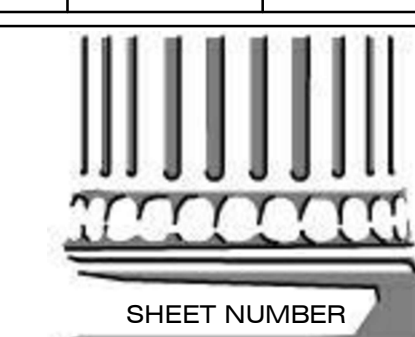
PROJECT NO.
25012

PROJECT MANAGER
JM

DATE ISSUED
2026.05.22

REVISED

NO.	DATE	BY	REVISION



P-103
ENLARGED
PLUMBING PLANS